

coached by Fred Hoffman and Jim Krischbaum, came out top, Monday, by defeating Chelsea State Bank, 13-8. Deserving winners are in front, from left, Kip Bertke, Tim Whitesall, Chris Seitz, Randy Sabo, John Hoffman, Richard Slater, Ted Merkel, Pete Eisele, Randy Krischbaum and Greg



Chelsea State Basketball Team
 Back row: Matt Villeneuve, Craig Leach, Rick Eder, Scott Dault, and Mark Stoll; in the back, John Rowe, Paul Haydock, Kevin Tobin, Darrow Keezer, Darin Piersma, Troy Schiller, Mike Ward and Mike Bareis.



Chelsea State Football Team
 Back row: John Daniels, Matt Heydauff, Brad Glasier, Don Nadeau, Don Morrison and Ernie Hadley; in the back, Coach Lapanowski, Dave Dawson, Dave Schaible, Mike Tobin, Louis Rlaner, Bob Sawyer and Matt Tobin.

KEEP YOUR COOL

On a hot night, keep your cool by serving sausage. They come out of the refrigerator and go right on the grill. Cut cooking time by choosing already cooked sausages and heat to increase appetite appeal.

FRENCH IN GERMAN

Two of the most popular names given babies in West Germany are French, not German. A survey revealed that more boys born in 1970 were christened Andreas and more girls Nicole than any other names.

PROPER GRINDER USE

When using a food grinder, put a piece of sandpaper, rough side down, on the counter and fasten the grinder over the paper to prevent slippage.

Subscribe today to The Standard!

District Court Proceedings

In 14th District Court during the week of July 24-30, George L. Bailey pled guilty to drunk and disorderly conduct. He was ordered to pay \$50 fines and costs by July 30.

George W. Potter pled guilty to driving with a suspended license. He was sentenced to fines and costs amounting to \$75 and three days in jail or 15 days in jail.

Jeffery Davis pled guilty to an amended charge of impaired driving. He will be sentenced Sept. 10.

Raymond Ritter pled guilty to speeding at 53 mph in a 35 mph speed zone. His fines and costs were \$27.

Steven J. Swaney pled guilty to careless driving and paid \$34 fines and costs.

Thomas Stock pled guilty to a charge of being a minor in possession of intoxicants. He was sentenced to fines and costs of \$40 and three days on the Chelsea Work Program.

Larry W. Lusk was fined \$16 for parking in an prohibited area and \$21 for careless driving.

Bruce Guster was fined \$50 for littering.

James Wencil pled guilty to traveling at 65 mph in a 45 mph speed zone. His fines and costs amounted to \$41.

Kim Chum was fined \$50 including costs for being in possession of beer in a state park during the beer ban.

James C. Slumbo was fined \$50 fines and costs for being in possession of beer in a state park during the beer ban.

Mark C. Ritchie was fined \$31 fines and costs for driving without sufficient care and caution.

Stephen J. Heller was ordered to pay \$21 fines and costs for failure to obey an officer's traffic signal.

Edwin C. Stacy pled guilty to drunk and disorderly conduct and was sentenced to fines and costs amounting to \$50. He also pled guilty to failing to stop in an assured distance and was fined \$21 fines and costs.

Paul E. Presswood was sentenced to 15 days in jail for driving under the influence of liquor and violating probation. His probation was reinstated.

Robert A. Pickell pled guilty to a charge of possession of marijuana. His bond was set at \$100 and he will be sentenced Sept. 10.

John E. Cross will be sentenced Sept. 10 for possession of marijuana. His bond was set at \$100.

Thomas M. Forner was fined \$21 fines and costs for being a passenger on a motorcycle without a helmet.

Robert T. Miller was fined \$21 fines and costs for boating without life preservers.

Mark E. Moss pled guilty to speeding at 50 mph in a 25 mph speed zone. He was fined \$41 fines and costs.

David W. West was fined \$16 fines and costs for disregarding a stop sign.

Gary Stricker pled guilty to violating the basic speed law. He was sentenced to \$21 fines and costs.

KILL 'EM DEAD

Lacebugs damage many shrubs, such as azalea, firethorn, rhododendron, hawthorn, sycamore, and some species of oak, says Richard Sauer, an entomologist at Michigan State University. If you find specks of blackish, shiny waste products, you can be sure lacebugs are the culprits.

For best control, use a contact insecticide such as lindane, malathion, or sevin. Spray at regular intervals throughout the summer to stop re-infestation.

DELICIOUS!

To add excitement to a roast or meat stew, stick three whole cloves into an onion and cook with it.

Fast Pitch Softball Schedule

All Games at CHS Field
 6:30 p.m. Aug. — Zion Lutheran vs. Westgate Auto.
 8:15 p.m. Chelsea Methodist Home vs. Sweepsters.

Teams listed first are home teams.

Slow Pitch Softball Schedule

7:00 p.m. Aug. 2—Village Motor Sales vs. Walt's Clippers.
 Aug. 7—Chelsea Methodist church vs. Rockwell Intl.
 Aug. 9—Village Motor Sales vs. IPSCO.
 Aug. 10—City Championship.

8:30 p.m. Chelsea Meth. church vs. IPSCO.
 Rulea Farms vs. Lanewood.
 Mark IV vs. Walt's Clippers.



SUITED FOR A GAME that suits them to a "T" are the members of Central Fibre's T-Ball team. They are in front from left, Chris Craft, Bill Lamb, David Weber, Mike O'Quinn and Mike Galbraith; and in the back, Jeffery Cox, Jeffery Haist, Todd Sprague, Tim Greenleaf, Bob Schleede and Coach Roy Greenleaf.

Gas Co. Office . . .

(Continued from page one)

Lacy said, however, that the majority of customers pay their bills by mail and use the telephone to conduct their other business with the company. "We can no longer justify the cost of operating our Chelsea office," Lacy said. "However, its closing will have no effect on the speed of service, installation of appliances or piping or handling of customer business. These all must go through the Ann Arbor office anyway," he said.

Lacy said Fred Pearsall, Chelsea manager, will be reassigned to the Ann Arbor office.

Jaycee Steak Fry

(Continued from page one)

horseshoes will whet appetites for the two-pound porterhouse steaks and corn on the cob.

A short meeting will also be held with a keynote speech given by state president Dick Robinson.

Bible School . . .

(Continued from page one)

Attendance soared to 233 on the fullest day.

For transportation in the Chelsea area, call 475-2012 or 428-7222. Ride the red bus to Bible school at North Sharon!

FARMERS' SUPPLY CO.
 PHONE 475-1777

Faster gains from better FEEDS

Calves get growing and gaining faster, on our balanced, fortified Calf Feed . . . enriched with needed vitamins, minerals.

Complete feeding rations for all your livestock, poultry.

A Standard Want Ad will get you quick results!

Jiffy market

Big Enough To Serve You . . . Small Enough To Know You!

Open 7 Days A Week 7 a.m. to 10 p.m.
 Corner Sibley & Wernker Rds. PHONE 475-1701
 Sale Prices Effective Thurs., Aug. 2 thru Sun., Aug. 5

TOP VALUE STAMPS - GUARANTEED SATISFACTION - COURTEOUS SERVICE

MEAT DEPT.

Sure wish things were back to where they were before the damn meat boycott.
 —Gene.

NOTICE: All sales items advertised are subject to availability. All sale merchandise will be limited. Because of the market condition there are shortages, but all steps will be taken to have a full line meat dept.

FRESH EGGS . 77¢

Dozen in Carton

6 1/2-OZ. CAN STAR KIST TUNA, Light Chunk	38¢
14-OZ. BOTTLE HUNT'S CATSUP	19¢
1-LB. CAN MAXWELL HOUSE COFFEE	99¢
A SUMMER FAVORITE—1-Lb. Can Comstock MIX BEAN SALAD	39¢
BUNNY POP WHITE OR YELLOW POP CORN	2-lb. bag 19¢

POTATO CHIPS . . 47¢

13-Oz. Bag

GERBER'S STRAINED FRUITS, VEGETABLES
BABY FOODS 3 jars 29¢

FRESH BAKED EVERY WED. & SAT.
GERMAN PRETZELS

NORTHERN
BATHROOM TISSUE, 4 roll pac 39¢

PRINGLE NEW
POTATO CHIPS . . single can 39¢

KILLS GERMS BY MILLIONS ON CONTACT, 14-OZ.
LISTERINE ANTISEPTIC 98¢

AMERICA'S FAVORITE
TIDE 69¢

Giant Size 3-Lb., 1-Oz. Box

FROZEN FOODS

COLE'S
GARLIC BREAD 47¢
 1-Lb. Loaf

CAMELOT
ORANGE JUICE 19¢
 6-Oz. Can

DAIRY DEPT.

LAND O' LAKES
BUTTER 69¢
 1-Lb. Carton

MICHIGAN
SOUR CREAM 39¢
 1 Pint

PRODUCE DEPT.

FRESH GREEN
CABBAGE 9¢
 Lb.

LONG SLENDER
CARROTS 19¢
 1-Lb. Pkg.

GIFFY MARKET HOT PRICE

3 1 Qt., 1 Pt., 48-Oz. N.R. Bottles **\$1.00**

YOUR CHOICE
 COKE - TAB - SPRITE
 FRESCA - FANTA
 ORANGE or ROOT BEER

Get the real thing. Coke.

BREAD and MILK

COUNTY FAIR WHITE **BREAD 19¢**
 1 1/4-Lb. Loaf

RISDON'S HOMOGENIZED **MILK 95¢**
 Gal.

CIGARETTES

ALL SIZES ALL BRANDS YOUR CHOICE **\$3.39**
 Carton of 10

Close Games Feature Slow Pitch Battles

Slow pitch action pitted Wolverine Bar, number one in the standings, against M & M Gravel, 10-2, with L. Hutchinson winning and R. Thomas taking a black mark.

Babe Ruth Team 4 Wins Over Team 1

On July 26, Babe Ruth Team 4 won a decisive 10-2 victory over Team 1 in a game played at the Chelsea Standard grounds.

Wolverine Bar played another outstanding game, defeating Babe Ruth Team 4, 10-2, in a game played at the Chelsea Standard grounds.

Wolverine Bar played another outstanding game, defeating Babe Ruth Team 4, 10-2, in a game played at the Chelsea Standard grounds.

Wolverine Bar played another outstanding game, defeating Babe Ruth Team 4, 10-2, in a game played at the Chelsea Standard grounds.

Wolverine Bar played another outstanding game, defeating Babe Ruth Team 4, 10-2, in a game played at the Chelsea Standard grounds.

Wolverine Bar played another outstanding game, defeating Babe Ruth Team 4, 10-2, in a game played at the Chelsea Standard grounds.

Wolverine Bar played another outstanding game, defeating Babe Ruth Team 4, 10-2, in a game played at the Chelsea Standard grounds.

Wolverine Bar played another outstanding game, defeating Babe Ruth Team 4, 10-2, in a game played at the Chelsea Standard grounds.

Wolverine Bar played another outstanding game, defeating Babe Ruth Team 4, 10-2, in a game played at the Chelsea Standard grounds.

Wolverine Bar played another outstanding game, defeating Babe Ruth Team 4, 10-2, in a game played at the Chelsea Standard grounds.

Wolverine Bar played another outstanding game, defeating Babe Ruth Team 4, 10-2, in a game played at the Chelsea Standard grounds.

Wolverine Bar played another outstanding game, defeating Babe Ruth Team 4, 10-2, in a game played at the Chelsea Standard grounds.

Wolverine Bar played another outstanding game, defeating Babe Ruth Team 4, 10-2, in a game played at the Chelsea Standard grounds.

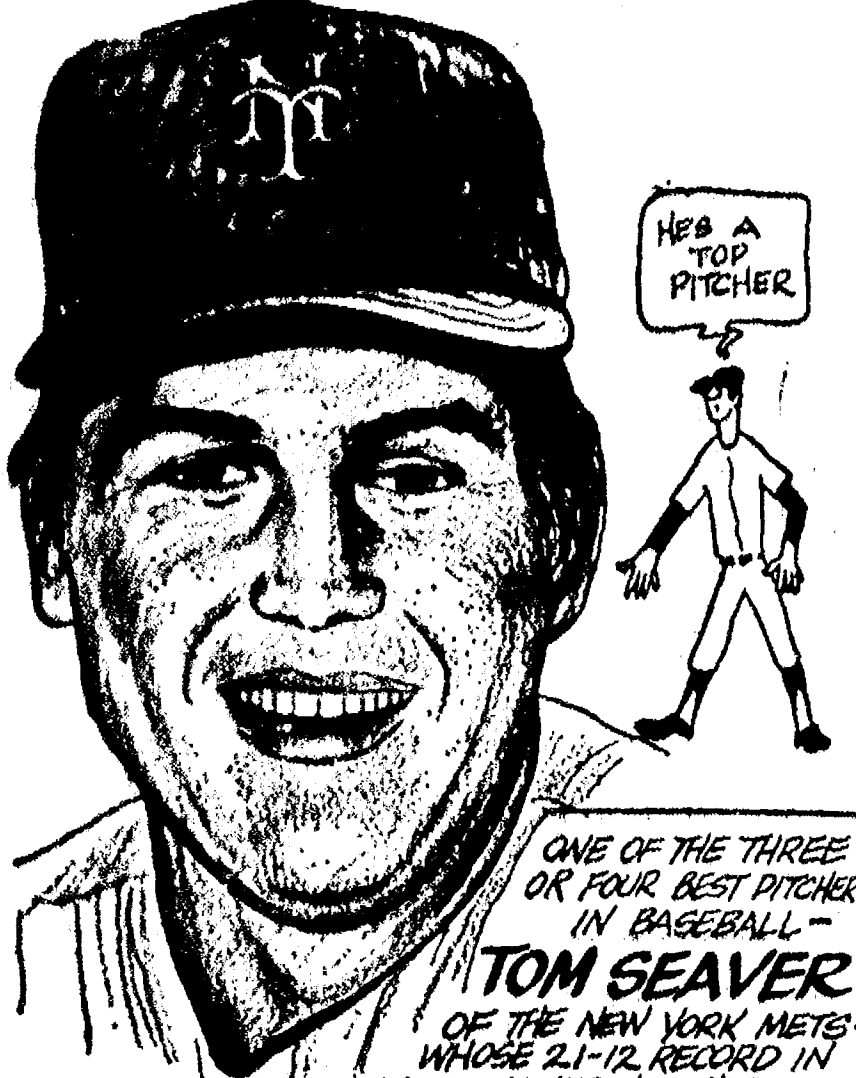
Wolverine Bar played another outstanding game, defeating Babe Ruth Team 4, 10-2, in a game played at the Chelsea Standard grounds.

Wolverine Bar played another outstanding game, defeating Babe Ruth Team 4, 10-2, in a game played at the Chelsea Standard grounds.

Wolverine Bar played another outstanding game, defeating Babe Ruth Team 4, 10-2, in a game played at the Chelsea Standard grounds.

Wolverine Bar played another outstanding game, defeating Babe Ruth Team 4, 10-2, in a game played at the Chelsea Standard grounds.

SPORTS CORNER



ONE OF THE THREE OR FOUR BEST PITCHERS IN BASEBALL - TOM SEAVER OF THE NEW YORK METS - WHOSE 21-12 RECORD IN 1972 MAKES HIS THIRD 2.0 VICTORY SEASON - HAS POSTED AN AVERAGE OF 2.92. THE ONE TIME CY YOUNG WINNER CAN BE THE BEST PITCHER IN THE MAJOR LEAGUES IN ANY GIVEN SEASON.

Babe Ruth No. 2 Team Gets Score

Chelsea's No. 4 Babe Ruth team gave Chelsea's proud and undefeated No. 2 team quite a scare this week. Pitching for the underdogs, John Adams allowed only three hits in the first four innings.

The spell was broken in the fifth. Dave Murphy drove in the first run of the game with a double. In the sixth inning, Steve Lylera batted in Francis Grohner, who had already singled and that was it. The game ended with two runs for Team No. 2; zero for Team No. 4.

Fine pitching was seen on both sides during this game. John Adams, and Kevin Kelly hurled for the losers while Jim Marshall, Dave Alber and Rex Miles tossed for the winners.

Both teams committed only one error in this very well-played contest. Chelsea No. 4 can feel proud even in defeat. Team No. 2 remains on top of the standings.

It's not difficult to braise meat or to "prepare a pot-roast." Important steps include browning the meat thoroughly so it remains brown while cooking in moisture. Avoid using too much liquid. One-fourth to one-half cup is usually the rule. Then, make sure there's a tight cover as well as low temperature for the whole cooking time.

Telephone Your Club News To 475-1371

Week of Aug. 2 - Thursday, Aug. 2 - Dave Lukasiak's Team No. 1 vs. Dick Lapanowski's Team No. 4 at the High school.

Dave Murphy's Team No. 2 vs. Bob Kelly's Team No. 3 at South school.

Little League Schedule Week of Aug. 2 - Thursday, Aug. 2 - 5:30 - Village Motor Sales vs. Rockwell International at the High school.

5:30 - Murphy's Barber Shop vs. Chelsea Jaycees at South school.

7:30 - Heydlauff's vs. W. C. Weber at South school.

Monday, Aug. 6 - 5:30 - All Stars vs. Champs.

CRISSCROSSED? The United States is crisscrossed by 800,000 miles of natural gas pipelines, some dating from the 19th century.

Wolverine Bar Holds Lead in Fast Pitch

As the fast pitch season moved toward a close, Zion Lutheran and the Chelsea Methodist Home met on secular ground, July 23. Zion earned the victory, 9-8. Both the winning pitcher Wackenhut and the loser, R. Nix, gave up seven hits. Wackenhut walked three men and Nix walked 10. Zion's cause was carried on by E. Heller's pitching in the seventh inning.

Nine runs was a magic sum later for M & M Gravel. That team faced Jiffy Mix that night. With R. Thomas pitching, the Gravel team won, 8-7. Jiffy Mix's Gaken gave up 11 hits, as did his counterpart, and he walked no one. Thomas walked three men. The balance was turned by errors. M & M had two; Jiffy Mix made seven.

St. Paul's team was deflated by Westgate Auto last week in a game that ended, 20-7. Jones took the win; J. Marshall was saddled with the loss.

Adair Printing and Sweepsters both racked up big scores in eight innings July 25. Adair had the crucial extra point when it ended, 22-21. The winning pitcher, Klapner, saw 15 hits off his throws and 21 walks. J. Boham, on the other side, gave up 16 hits and 13 batters got to base on balls.

Both pitchers added home runs to the contest as did J. Risner of Sweepsters. The win came in the bottom of the eighth when a base hit by Romelhardt pushed in a player who had walked.

Fast Pitch Softball Standings as of July 26

AMERICAN LEAGUE	
Walt's Clippers	W L
IPSCO	7 1
Rockwell International	6 2
Lanewood	4 4
	2 6

NATIONAL LEAGUE

W L	
Rulea Farms	4 4
Village Motor Sales	3 5
Methodist Church	3 5
Mark IV	3 5

TOP 10 BATTING AVERAGES. 20 or more at bats

Standings as of July 26	
Pct.	
Colliers, Walt's Clippers	.772
Shively, Rockwell	.651
Collins, Rockwell	.555
Secrease, Methodist Church	.550
Gieske, Methodist Church	.538
R. O. Myers, Walt's Clippers	.535
Elfe, Village Motor Sales	.521
Krasir, Village Motor	.520
Pasquantonio, Village Motors	.516
K. MacColman, Mark IV	.500

BOWLERS Round-Up Time For Fall Leagues Now Starting

18 Astroline Lanes - Billiards & Air Hockey

MICHIGAN STATE LOTTERY TICKET AGENT

CHELSEA LANES, Inc.

PHONE 475-8141

1189 M-52

CHELSEA

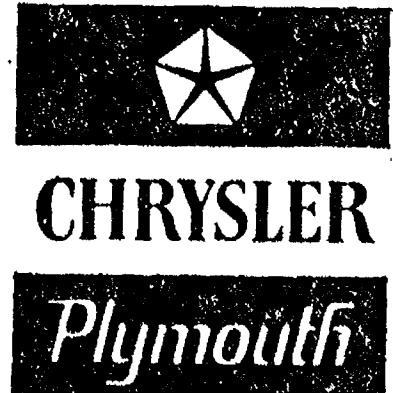
Tell People You Read It in The Standard!



'73 Chrysler: Beautiful and even more affordable at our year-end prices.

From the beginning, Chrysler has been acclaimed for its engineering... its performance... its roominess and elegance. A heritage of greatness, summed up in the 1973 Chrysler. Compare it with any other car—for room, comfort and ride. Compare it for overall value. Chrysler offers electronic ignition as standard. Something else to consider: Chrysler runs on regular gas. And now, at year-end prices, Chrysler is more affordable than ever. There's never been a better time to move up to Chrysler. So see us now.

Your next car could be a Chrysler. Very easily.



AUTHORIZED DEALERS CHRYSLER MOTORS CORPORATION

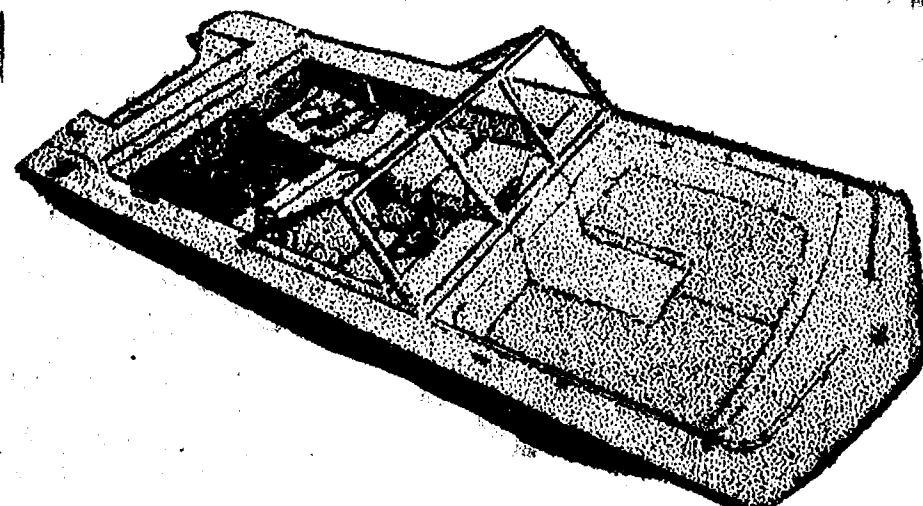
VILLAGE MOTOR SALES, INC.

1185 MANCHESTER ROAD

CHELSEA, MICHIGAN

Real Estate One.
WEED REALTY, INC., ASSOCIATES
REALTORS
475-8693
1196 M-52, CHELSEA

Have Lunch Today
at the
MARK IV LOUNGE
PLEASANT - AIR-CONDITIONED
ADULTS



BOAT SALE

All boats remaining in stock are on sale NOW. Prices are lowest ever on a wide variety of STARCRAFT and SEA SPRITE runabouts in aluminum or fiberglass, tri-hulls or V-hulls. We also have Marlin Jet Boats and feature a complete line of Evinrude Outboard Motors. Everything is priced to sell now! So come to our Boat Sale and find a good deal today.

COCHRAN'S SPORTING GOODS

Phone 434-2440

5511 W. Michigan Ave., Ypsilanti

Monday & Friday 9-9, Wednesday, Thursday, Saturday, 9-6
Closed Sunday and Tuesday

Community Calendar

Chelsea Community Center presents a series of programs for the month of August. The first program is a "Summer Youth Program" designed to help youth develop self-esteem and self-discipline. The program will run from August 1 to August 10, 1973. The second program is a "Summer Reading Program" for children. The program will run from August 1 to August 10, 1973. The third program is a "Summer Art Program" for children. The program will run from August 1 to August 10, 1973. The fourth program is a "Summer Music Program" for children. The program will run from August 1 to August 10, 1973. The fifth program is a "Summer Dance Program" for children. The program will run from August 1 to August 10, 1973. The sixth program is a "Summer Sports Program" for children. The program will run from August 1 to August 10, 1973. The seventh program is a "Summer Gardening Program" for children. The program will run from August 1 to August 10, 1973. The eighth program is a "Summer Crafts Program" for children. The program will run from August 1 to August 10, 1973. The ninth program is a "Summer Science Program" for children. The program will run from August 1 to August 10, 1973. The tenth program is a "Summer History Program" for children. The program will run from August 1 to August 10, 1973.

Chelsea Community Fair
Aug. 28 - Sept. 1

The fair will be held at the Chelsea Community Center. It will feature a variety of activities for children and adults. There will be games, contests, and a chance to win prizes. The fair will be a great way to spend a day with the family.

And Now the Good News!

PRICES OF STRUCTURAL LUMBER HAVE LEVELLED OFF

and

Plywood

PRICES ARE DOWN

TYPE OF PANEL	OLD PRICE	TODAY'S PRICE
1/2" S-PLY SHEATHING EXTERIOR GLUE	\$6.98	\$5.58
1/4" GOOD 1-SIDE INTERIOR	\$5.76	\$4.80
3/4" GOOD 1-SIDE EXTERIOR GLUE	\$8.72	\$7.36
3/4" GOOD 1-SIDE INTERIOR	\$12.48	\$10.80
3/4" GOOD 1-SIDE EXTERIOR GLUE	\$13.76	\$11.60

At CHELSEA LUMBER

We Believe That NOW

Is the Time To Build or Remodel!

DEATHS

Mrs. Elba H. Gage
Life-Living Area Resident
Died at Chelsea Hospital

Mrs. Elba H. (Lelia B.) Gage, 77, of 126 South St., died Friday, July 27, at the Chelsea Community Hospital after an illness of several months. She had been a resident of the area all of her life.

Born June 1, 1896, in Lima Township, she was a daughter of Herman and Anna Kleinbach. She was a graduate of Ypsilanti State Normal College and had taught at the Everett school. She was married to Elba H. Gage on March 19, 1917. They had farmed in Lima Township, moving to Chelsea in 1946.

Mrs. Gage was a member of First Congregational United Church of Christ of Chelsea and the Eastern Chapter of the church. She had served the church as a deacon. She also belonged to Olive Chapter No. 108, Order of Eastern Star and the Methodist Older Adult Group.

Surviving are her husband; a daughter, Mrs. Donald (Mary Ann) Labo of Flint; a sister, Mrs. Donald (Katherine) Barden of South Haven; a brother, Carl Fletcher of Asheville, N. C.; and seven grandchildren: Lynn Gage and Pat Rowland of Tucson, Ariz.; Edward Gage of Chelsea; Paul Gage of Ann Arbor; Sharon, Elton and Mario Labo of Flint. A great-grandchild, Chris Rowland of Tucson, also survives, as well as several nieces and nephews. Two sons preceded Mrs. Gage in death, Herman ("H. G.") Gage on March 14, 1960 and Walter Gage on July 10, 1972.

Funeral services were held Sunday, July 29, at 2:30 p.m. at the Burghard Funeral Home with the Rev. Carl W. Schwarm and the Rev. Thomas Toy officiating. Burial followed in Vermont Cemetery, Sylvan township. The family suggests that those who wish to do so may make contributions in Mrs. Gage's memory to the First Congregational Church Memorial Fund.

Cook Book Being Prepared By Modern Mothers Study Club

During Chelsea's first art fair, Aug. 10 and 11, the arts of weaving, pottery making and glass blowing will be demonstrated before your very eyes. However, few observers will be able to practice those arts in their own homes, after just one demonstration.

Members of Chelsea's Modern Mothers Club, on the other hand, will be selling a skill that can, indeed, be taken home and practiced immediately.

Their booth on Main St. during the fair and sidewalk sales will sell their newly published cook-book, "Recipes You're Always Wanted, But Were Afraid To Ask For." On its 225 pages are the members' favorite meal ideas, some of which "are from famous chefs, both here and abroad, who have given a little gem recipe to a favorite patron," says Mrs. Edwin E. Brown.

It was Mrs. Brown who first suggested the club embark on this ambitious project as a way to raise money while bringing the members closer together.

She and Mrs. Peter Flintoff were given the privilege of sorting the many recipes offered. They tried as many as possible and selected only the most appetizing for the final edition.

The recipes in the book range from soups to nuts. There is even a foreign menu section.

Collecting recipes was only a beginning. Last spring Mrs. Judy Parker's 8th grade art class was asked to offer title suggestions and illustrations to spice up the publication. Mrs. Brown said they were tapped because "children often have good original ideas."

Neil Cockerline came up with the winning title. At the same time he ran the risk of opening himself up to endless teasing about the kind of literature he reads. His classmate, Michell Ziegler, won \$5, as did Neil, for her pen and ink cover design.

Other young artists won free passes to Mr. and Mrs. William Coelius' Mini-Putt for their decorative divider pages.

With recipes and illustrations in hand, the entire club worked together preparing the copy for publication. Typing and proof reading was quite a job. Members, too, will help assemble the printed 5 1/2" by 9" pages and prepare them for the spiral-binding as the publication date approaches.

"You can't say anyone did more than the rest," Mrs. Brown explained, "Each in our own way helped in whatever way we could."

Proceeds from the book sale will go toward the club's many projects, the Chelsea High School Scholarship Fund, the McKnne Memorial Library and Spaulding for Children.

Copies of the cookbook may be purchased at the art fair or from Mrs. Edwin E. Vaught, finance chairman for the club. The cost is \$4.

North Lake Church Fun Fair

(Continued from page one)

booth will offer articles used in the kitchen. Home-made bread, cookies, cakes, pies and candy will be sold. There will also be house plants, garden vegetables, fruit jelly and jams.

The ladies will be serving hot dogs, barbecues, potato chips and ice cream cones for lunch. Starting at 5 p.m. a buffet dinner of chicken, ham, potatoes, salad vegetables, rolls and home-made pies and cakes will be served.

The Junior MYF is planning to construct an arcade of such attractions as the fish pond, pyramid balls, darts and a salami throw where visitors may try their skill.

For those who enjoy a Flea Market, there will be a booth full of bargains, too.

Area Woman's Mother Dies in Kentucky

Sallie Shepherd, mother of Mrs. Clarence (Alma) Holliday of Chelsea, died July 25, 1973. She was 76 years old.

She is survived by her daughter, Alma, and grandsons Roy and Scott Holliday.

Funeral services were Friday, July 27, at Licking River Baptist church with the Rev. Norman Misplay officiating. She was buried in Shepherd Cemetery, Royalton, Ky. Scott Holliday was a pall bearer.

MOBILE LIVING

California has more mobile homes than any other state, about 197,000, followed by Florida and North Carolina.

urday, at the Federated church. Interment was at East Cemetery.

The family suggests that those wishing to do so may make memorial contributions to Chelsea Medical Center.

Mrs. Duane Sawdy

Grass Lake Resident Dies At Chelsea Medical Center

Mrs. Duane (Genevieve) L. Sawdy of 638 E. Michigan Ave., Grass Lake, died at Chelsea Medical Center Thursday morning, July 26. She was 46.

Surviving are her husband, Duane; one son, Lt. Gary L. Sawdy, DDS, who is serving in the Navy on Okinawa; one daughter, Linda Dee Sawdy of Ann Arbor; her step-mother, Mrs. Ruth Dunlap; one sister, Mrs. Theodore (Marjorie) Faust; one brother, Thomas Dunlap, all of Chelsea; and six nieces.

She was a member of the Federated Church of Grass Lake. Funeral services were held Saturday, Aug. 4, at 2 p.m. at the Chelsea Methodist Home Chapel with the Rev. Richard A. Clemans officiating. Committal service was at Hillside Cemetery, Belleville. Arrangements were by Staffan Funeral Home.

GAMBLES

110 N. Main St. Phone 475-7472

Gambles GRADE 'A' EXTERIOR WHITE

\$6.99 Gal. Oil Base

\$5.98 Gal. Latex

Gallon in a 2-Gallon Container

Latex or Oil Base—LOW PRICE

Years of beauty and protection at low cost! Ideal for new or weathered surfaces—use for primer or finish coat. Oil base or latex paint is mildew-resistant, extremely durable and fade resistant. Stays dazzling white! Shop Gambles today! 30-4603, 4530

Steve Bennett Joins In Michigan Tech Summer Youth Program

Designing a bridge, creating a radio program, digging for relics of past civilizations, testing a lake for pollution or putting out a forest fire, may sound like ambitious operations for high school students. But that was the action on the Michigan Technological University campus July 8-21 when nearly 630 youths from 19 states and Canada participated in the Summer Youth Program, "Explorations in Careers and Knowledge."

Steve Bennett, son of Mr. and Mrs. James Bennett, 8215 Beeman Rd., was among the participants.

With the accent on "doing things" rather than "hearing about things," the specially-designed series of 24 intensive one- and two-week programs gave students a chance to learn about and acquire skills in the fields which interest them.

Sgt. Roy Holliday came home July 7 for a two-week vacation with his family. He reported back to Germany, July 21, where he will be stationed until March. He is the son of Mr. and Mrs. Clarence Holliday.

Dennis Bauer Attends Spartan Wrestling Clinic

Take downs, break downs and escapes were some of the important moves studied from July 23 through July 27 on the Olivet College campus as the college hosted more than 300 high school wrestlers from across the country. They were attending the 11th annual Spartan Wrestling Clinic there.

Dennis Bauer was Chelsea's representative who attended the week-long session, July 15 through July 20. He was taught aggressive and defensive methods in addition to skills concerning officiating and rule interpretation.

Jare Klein, wrestling and tennis coach at Olivet, is co-ordinator of the clinic, now in its fourth year at Olivet. Director of the program is Grady Peninger, wrestling coach at Michigan State University and coach of the 1987 NCAA Champions and holder of seven straight big ten team titles. Peninger was named "Coach of the Year" for his 1966-67 National Collegiate Athletic Association champion team.

Hotel Resident Dies Monday Morning

The body of a dead man was discovered Monday morning in a room of Sylvan Hotel at 114 N. Main. It was discovered by the deceased's son who had come from Haslett to pick him up.

Clarence Hilliard, 57, was found lying in bed by his son, Jimmie Hilliard, 33. Medical authorities determined that he had died of a heart attack at approximately 2 a.m. that morning.

Hilliard, born July 23, 1916, in Lancaster, O., was an oil driller by profession. He will be buried in Mt. Pleasant.

SPLIT PERSONALITY?

His personality isn't split—it's shredded.

What about the cost of living (elsewhere) while they fix your apartment?

In our Homeowners Policy for apartment dwellers, it can all be down in black and white so that we would be paying your additional living expenses while it's being repaired! It's comforting to know that if you have to live elsewhere temporarily, as a result of fire, explosion, theft and other unexpected events, you could count on us to see you through. Give us a call today. We'll keep it altogether for you!

it's better altogether

A. D. MAYER AGENCY, INC.

115 PARK ST., CHELSEA
BOB BARLOW, AGENT
PHONE 475-2030

Auto-Owners Insurance
LifeHomeCarBusiness

SEMI-ANNUAL SALE FINE CLOTHING and FURNISHINGS at Reductions of 20% to 50%

All items for this sale are from our regular stock.

STRIETER'S MEN'S WEAR

"The Place To Go For Brands You Know"

HEYDLAUFF'S

• WE DISPLAY • DEMONSTRATE • INSTALL • AND SERVICE

The Entire Line of Dependable MAYTAGS!

One Stop to SHOP!

Big Family Size MAYTAG Automatics & Halo-of-Heat® Dryers...Loaded with hard working Features like these:

- Automatic water level control saves water, detergent
- Power Fin Agitator for all size loads • Permanent Press Cycle • Lin Filter • Perforated washbasket gets dirt away from clean clothes • Full time Safety Lid—action stops in seconds when lid is opened.
- No Hot Spots Gentle, even heat, surrounds clothes
- Permanent Press—keeps wrinkles out, creases in • Fine mesh lint filter • Full opening safety door • Electronic Control—automatically shuts off when proper dryness has been reached (on most models).

Apartment Size MAYTAG Porta-Washer® and Porta-Dryer®. Complete Portable Home Laundry WHEREVER you live..

MAYTAG PORTA-WASHER® portable, quiet. No special installation. Washes a generous load Maytag clean in minutes. 8 settings—Regular, Permanent Press and Delicate.

MAYTAG PORTA-DRYER® needs no installation or venting. Just plug in any adequate 115 volt outlet. Does everything a big dryer does except take up space.

Portable or Built-In Dishwashers Food Waste Disposers, too!

HEYDLAUFF'S

113 N. Main St., Chelsea Phone 475-1221



1101 M-52, Chelsea
 Corner of M-52 and Old US-12
OPEN: 8 to 10 Daily
8 to 7 Sunday

BIG

**YOU'LL STRETCH
 YOUR DOLLARS HERE!**

SAVINGS

STRETCH YOUR DOLLAR!

BORDEN ELSIE	PEPSI
ICE CREAM	ICE CREAM
63¢ With Coupon	88¢ With Coupon
8 Pac 10-Oz. NR	
SAVE 30¢	SAVE 29¢

STRETCH YOUR DOLLAR!

LIQUID DETERGENT	LAUNDRY DETERGENT
IVORY	TIDE
39¢ With Coupon	\$2.44 With Coupon
22-Oz.	171-Oz.
SAVE 10¢	SAVE 59¢

STRETCH YOUR DOLLAR!

INSTANT TEA	PAPER PLATES
NESTEA	58¢
69¢ With Coupon	
3-Oz. Jar	100 Ct.
SAVE 50¢	

STRETCH YOUR DOLLAR!

SAVORY BULK	FRESH GROUND PURE BEEF
BACON	HAMBURG
\$1.19	\$1.09
Lb.	3 Lbs. or More Lb.

STRETCH YOUR DOLLAR!

"FRESH JUICY"	MICHIGAN
PEACHES	BLUEBERRIES
28¢	49¢
Lb.	Pint

**MANY MORE MONEY - SAVING SPECIALS
 IN OUR 3 PAGE AD AVAILABLE at STORE**

BORDEN'S ELSIE

ICE CREAM

63¢

1/2 gal. **SAVE 30¢**

Limit 1 Expires Aug. 4, 1973

PEPSI

88¢

8 Pack 10-Oz. N.R. Bottle **SAVE 29¢**

Limit 1 Expires Aug. 4, 1973

LIQUID IVORY

DETERGENT

39¢

22-Oz. **SAVE 16¢**

Limit 1 Expires Aug. 4, 1973

LAUNDRY DETERGENT

TIDE

\$2.44

171-Oz. **SAVE 59¢**

Limit 1 Expires Aug. 4, 1973

INSTANT TEA

NESTEA

69¢

3-Oz. Jar **SAVE 50¢**

Limit 1 Expires Aug. 4, 1973

Lima Residents Asked To Help With Zoning

Lima township is preparing a new township zoning ordinance, but before the new ordinance is offered for resident approval, the township board is taking an intermediate step, as suggested by the Washtenaw County Planning Commission.

Tuesday, Aug. 28, residents are asked to attend a public hearing to inspect a draft of "implementation and priority element," a supplement to the already approved general plan.

The document will merely make specific many of the suggestions implicit in the plan. Definitions of industrial, commercial and residential zones, for example, will be spelled out and elaborated.

The text will explain the planning map that has already been drawn up.

By being more specific about the implications of the general plan, the board will not have to go too much further to decide which ordinances it needs.

The leap from general plan to zoning ordinance, on the other hand, is less easy to make. The intermediate step makes for a more orderly and efficient process.

As in the past, citizen input is very important in the procedure. The implementation and priority element can become instrumental in determining the zoning ordinance only if the township residents approve it.

Three Youths Nabbed With Stolen Auto

Two 17-year-olds and a juvenile were picked up by police at 3:15 Friday morning as they were washing a stolen car at the 25 Cent Car Wash on S. Main St.

According to police reports, Patrolmen David Peebles and Robert Browning stopped to question the youths, Charles Cullon Hodge, Jr., James J. Riley and their juvenile companion, during a routine patrol.

The officers noticed signs of nervousness in the boys as they underwent routine questioning. They also noticed that the car, which "looked as if it had been on back roads for a month," was being cleaned but the license plates were left masked with mud.

A check with LEIN revealed that the boys did not have records but that the 1973 Chevrolet Monte Carlo had been stolen from Oscoda.

The 17-year-olds were charged with being in possession of stolen property valued at more than \$100. They were transported to Washtenaw County Jail. The juvenile was turned over to his mother who came from Hale to claim him.

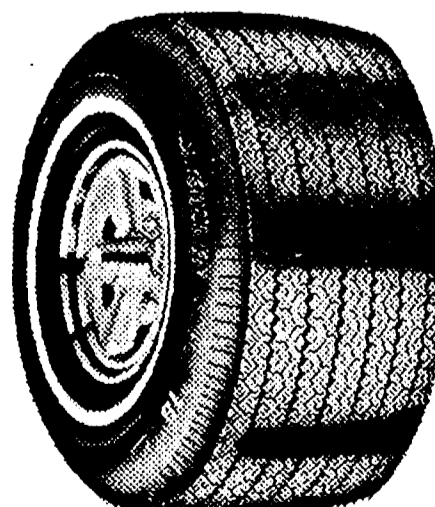
Riley and Hodge were arraigned Friday and released on \$1,000 bond. Their case was bound over to Circuit court.

CICADA-KILLER WASPS

Have you been alarmed by the presence of large wasps in your yard? These giant black and yellow creatures are cicada-killer wasps, says Gerald Drahaim, Michigan State University horticultural specialist, Wayne county.

Nesting in a thumb-sized hole in the ground 8 to 12 inches deep, the wasps collect and store cicadas as food for developing larvae of a new generation of wasps. For control, Drahaim recommends spraying the soil and burrow with carbaryl (Sevin).

PALMER
Ford



**Think About Us
 for
 High Quality
 TIRES
 at
 DISCOUNT PRICES**

**Ask about our
 Free Replacement
 Guarantee**

**222 S. MAIN ST.
 Since April, 1912**

475-1301

Second
 Section

The Chelsea Standard

Pages
 7 - 12

CHELSEA, MICHIGAN, THURSDAY, AUGUST 2, 1973



MUSTY MEMORIES MADE BRIGHT: The Heritage Room at the Chelsea Methodist Home contains the odds and ends and furnishings that populated many of the residents' childhoods. Visitors, too, usually find an item or two that brings back memories. The period pieces, dating from the last century and early 1900's, originally belonged

to Home residents and were donated to the home in its earlier days. Here Mrs. Fred Kinghorn, who has donated several pieces to the collection, sits next to a marble topped table and ornate candleabra. In the far right is the antique hat rack that used to stand in the Home's main entrance.

Heritage Room at Methodist Home Brings Back Memories

Memories elusive as gossamer at times are concrete and overpowering at others. A song, a sound, a smell can release the past so that it comes crashing into the present.

The Chelsea Methodist Home has a place that possesses such power. Appropriately placed beneath the chapel, it is the home of a temporal spirit that touches nearly everyone who visits it.

The Heritage Room, with its collection of period furniture and accessories, touches residents and visitors as well. For some, it is reminiscent of the family home. For others, it looks like Grandma's.

The contents of the room, culled from attic and storage rooms at the Home over the last three years, include only a few true antiques. Nevertheless, explains Mrs. Richard (Jeannette) Clemans, the collection is valuable for what it offers the beholder.

"The old pieces bring our residents back to an era they grew up in," she says. "The visitors find the display interesting because the pieces might have belonged to individuals they knew at the Home."

While it is only rarely that the specific origins of the pieces can be determined, it is safe to say that the majority were given to the Home in payment for residence at the Home. Most date from the turn of the century.

"In the past, when the Home was founded in 1904," says Mrs. Clemans, "people didn't plan for old age. It was understood that they would be taken care of by relatives. But some out-lived their families and although they didn't have much money, the church saw and met the need for an old people's home."

Both retirement life and Chelsea Methodist Home have changed radically since then. It is only rarely now that individuals give up their possessions to take up residence in the Home.

But in the early years, the Home could only provide for the elderly by functioning as a kind of commune. The Home was furnished with the china and flatware, linen and furniture the residents brought with them.

Food was grown by the residents' own efforts in large garden plots to the north of the main building. In the fall, Methodist congregations in the district would donate produce to be canned. It was the Rev. Seth Reed (1823-1924) who saw to it that the Home made ends meet during those early years. His benevolent bearded face now looks out from an oil painting in the Heritage Room.

Over the years, the worn or less useful items were put away or even discarded and it is only by chance and the vigilance of the Rev. and Mrs. Richard Clemans and Mrs. V. O. Johnson, with her tastes for antiques, that so many of the old articles have been found and displayed.

It all began modestly as a temporary exhibit for the annual open house in 1970. The display of old furniture was received so enthusiastically that the organizers could not bear to return the pieces to the darkness.

The Rev. Clemans prevailed upon the powers that be to make the storage area below the chapel available for a permanent display.

With a paint job, some red satin drapes salvaged from the attic and the installation of some original ceiling lights left over from the Home's earlier

days, the basement room was turned into a suitable setting.

Furniture and keepsakes are displayed in arrangements that correspond to rooms in a typical Victorian home. At first there is the foyer, graced by a seven-foot tall hat rack complete with umbrella stand and mirror.

This lovely piece, with its loops of burnished wood, stood in the entrance of the Home for many years. Its origin is unknown, but it has been designated a true antique.

Near it hangs a tapestry, a copy of a 15th century work, that would look at home in the dark paneled entry hall of an older home. It was given to the Home in the 1930's by Mrs. L. W. Newcome, an elderly lady who was very pleased to learn that her gift had been resurrected from the attic.

Another arrangement at the head of the Heritage Room is reminiscent of an old library. Heavy dark chairs surround a bookcase of old volumes. Spread under glass on the massive desk top are old letters and marriage certificates from the last century.

In the parlor are seen fine examples of the now rare marble-top tables that were so common in Victorian homes. An ornate gilt candleabra with crystal prisms sets regally on one in front of an equally ornate mirror.

The old-fashioned secretary in this grouping holds a tiny Bible and a daguerrotype, an early photograph, of Mrs. Fred Kinghorn's great-great-uncle. Mrs. Kinghorn, a resident at the home, has donated several choice pieces to the collection, including a lovely linen lace table cloth that her husband's grandmother made by hand in Scotland.

One of the most peculiar of all the pieces in the collection is a marble and metal set of shelves. Recently an appraiser said it was, in fact, an antique. Strangely enough, it had been discarded behind the maintenance building for several years before the Rev. Fall, a former administrator, saved it. It is a favorite of residents who grew to love it when it adorned their hall.

Another curio in the parlor is a copy of McGuffey's Eclectic Reader, the Dick and Jane series of yesteryear.

As one moves toward the dining room area, one's attention is caught by an impressive gilt frame surrounding the faded sketch of a kind-eyed man. He is James E. Jacklin, a founder of the home who strove to "make old age comfortable."

The dining room is well-stocked with examples of the china that residents brought with them. A cherry wood pedestal table, the top of which is a perfect circle cut from one piece of wood, is set with typical china and flatware of the times. Examples of silverplate flatware and implements are also on display.

The bedroom collection includes a dresser topped with an antique vanity set. One of the hand-painted china pieces is a hair cup where hair cleaned from brushes was kept to fasten braids and buns.

Also in the bedroom is an old leather shirt bag. The ageing valise, not unlike a doctor's bag, was, in fact, carried by a country doctor. A resident at the Home explained that her father used the bag when going out on calls, not for medications, but to

carry a clean shirt since he never knew when he'd get back home again.

On the small, single bed lies a hand-made quilt made in the wreath of roses pattern in 1940 by Adeline Hathaway Irick's grandmother. Curling irons and strips of rolled kid leather, used as primitive rollers, are displayed on the bureau.

Another area of the Heritage Room is devoted to tools and the old wagon once used by residents in harvesting their food. Also in that area is a collection of blacksmith's paraphernalia, an anvil and a trough for the fire.

A set of carved wooden pedestal tables are used to display velvet picture albums and keepsakes. A former administrator of the Home ordered an entire set of 14 tables made for the Home. Several are still in everyday use.

After one views the collection of costume jewelry, one moves to one of the more modern additions of the exhibit, an extensive assortment of salt and pepper shakers.

Mrs. Clemans explains that since they have opened the Heritage Room, several residents have donated items to be displayed with the understanding that things added to the collection become the property of the Home.

A relatively new resident of the home, for example, donated an exquisite hand-painted vase that was given to her sister as a wedding present in 1912. She had longed to display it somewhere and the Heritage Room offered the perfect place.

There is room, both on the floor and in display cases, for additions to collection, but Mrs. Clemans does not expect that the exhibit will grow much from now on. Residents rarely bring furniture with them during these more prosperous days.

The Heritage Room, although concerned with the past, is very much a part of the present of the Home. It is a "must" stop for visitors to the home any time of the year, but especially during the annual fall open house. The residents, too, enjoy wandering in its memories.

Mobil-Toons
 By GLENN



"What a wonderful dream... my profit was almost as much as my expenses."

We always put service first!

**GLENN'S
 MOBIL SERVICE**

1629 M-52 & I-94

CHELSEA, MICHIGAN

Phone 475-1767

GLENN HEIM

PROP.

USE ACTION-PACKED WANT ADS

Just
Phone
475-1371

WANT ADS

The Chelsea Standard
8000 sq. ft. 2-1/2 story
highly finished home with
hardwood floors, central
heating, large kitchen, full
bath, 2 bedrooms, 2 living
rooms, 2 dining rooms, 2
porches, 2 terraces, 2
patios, 2 lawns, 2 gardens,
2 ponds, 2 lakes, 2
streams, 2 mountains, 2
valleys, 2 plains, 2
deserts, 2 oceans, 2
continents, 2 worlds, 2
universes, 2 everything.

BEAUTIFUL FACE LOT

The Village Rd. between Fletcher
and Louis Center Rd.
Well suited to suit.

CHELSEA 475-2828

REAL ESTATE

2-BEDROOM older home with
small barn on 10 beautiful acres
adjacent to state land. Chelsea
schools. \$15,000.
4-5-BEDROOM home, needs work,
plus two mobile homes on 5 1/2
acres. Stockbridge schools. \$32,500.
10-ACRE PARCEL, some high
and rolling with trees, all good
building sites. Dealer schools.
APPROXIMATELY 50 ACRES
includes some woods and marsh
land, Stockbridge area, state land
border two boundaries. \$350 per
acre.
2-ACRE building site, high rolling
and wooded. Chelsea schools.
\$7,000.
10-ACRE building sites, some high
and rolling, some with trees and
pond, on hard surfaced road. Chelsea
schools.
13-ACRE building site, very nice
and beautiful roll, 5 1/2 miles from
Chelsea.
80-FOOT lake-front building site,
well wooded, three minutes from
Chelsea. Adjacent to state land.

WATERLOO REALTY

JoAnn Warywoda, Broker
475-7498

GAR - NETT'S

Flower & Gift Shop
Your Friendly Florist
112 E. Middle St., Chelsea
PHONE 475-1400

Funeral Flowers
Wedding Flowers
Out Flowers (arranged or boxed)
Green Plants - Corsages
WE DELIVER

FOR RENT—1-bedroom apartment
in country near Dexter. Clean,
quiet, and comfortable. Single or
married couple only. \$115 month.
References and deposit. Box W,
Dexter Leader.

WANT ADS

FORMAL WEAR
RENTAL SERVICE
Proms - Weddings - Special Events
& Different Colors.
Foster's Men's Wear

FRISINGER 475-8681

CHELSEA
THE OLIVE SCHOOL - Manchester
Rd. surrounded by big trees.
1 bedroom, 1 bath, 1 acre. \$15,000

1-BEDROOM RANCH - Half Moon
Lake. 1 1/2 car attached garage.
\$25,000. Excellent condition.

1-BEDROOM RANCH - Blind Lake
shade trees, 3 lots. \$30,000.

1-YEAR-OLD Ranch, hilltop setting,
3 bedrooms, 1 acre. \$30,000.

MANCHESTER

COUNTRY LIVING - 1-bedroom
ranch, 2 1/2 acres, 2 1/2 car garage,
age, family room.

VILLAGE OF MANCHESTER, 4-
bedroom older home, 1,800 sq. ft.
\$33,500.

OPERATING ORCHARD - 2,300
fruit trees, 3-bedroom home,
4.5 acres.

STOCKBRIDGE

2-BEDROOM RANCH, attached
fireplace, excellent condition,
1 acre. \$17,000.

4-BEDROOM older home in the
village, double lot, aluminum
siding. \$33,500.

UNADILLA TOWNSHIP - 3-bedroom
home, lots of extras, some appliances
included, owner transferred
out of state, must sell. \$28,000.

BUILDING PARCELS—2 1/2 acres,
10 acres, 15 acres, 11 acres.

FRISINGER REALTORS

Chelsea 475-8681
Ann Arbor 769-8877

Evenings:
Toby Peterson - 475-2718
Hope Bushnell - 475-7180
Mary Ann Staebler - 475-1432
Herman Koenn - 475-2618
Tina Cotton - 475-7143
Paul Frisinger - 475-2621
George Frisinger - 475-2903

Summer Clearance
Save 1/3 to 1/2 Off
DANCER'S
Main Floor

EXPERIENCED PAINTER for interior
or exterior. Will do large
or small jobs. Can furnish local
references. Free estimate. Reasonable
rates. 475-1608.

1971 CHEVROLET Blazer for sale.
4-wheel drive, power steering,
posi-traction, radio. Call 1-482-2278.

LOST—One female and one male
Brittany Spaniel in the vicinity
of Chelsea-Dexter and Trinkle Rds.
Call 475-8853.

WANT ADS

FOR SALE—71 Vega. \$1,300.
Must sell. Ph. 475-4122.

KLINK EXCAVATING

Buildings - Backhoe
Road Work - Basements
Trucking - Crane Work
Top Soil - Demolition
Drainfield - Septic Tank
Trucking. 8" up

Industrial, Residential, Commercial
CALL 475-7681

LADIES Summer Footwear 1/2 Off DANCER'S Main Floor

INVENTORY REDUCTION SALE TOP TRADE-INS BRING YOUR TITLE!

Demos at Tremendous Savings

72 DODGE Polara Custom 2-dr.
hardtop, 360, auto., p.s., p.b.,
air cond., vinyl roof, rear
speaker, 3,000 miles. Save!

73 PLYMOUTH Fury III 4-dr. sedan,
360, auto., p.s., p.b., air cond.,
vinyl roof, 5,000 miles. Driver-Ed. car. Save!

72 PLYMOUTH Gran Coupe, 400,
auto., p.s., p.b., air, vinyl roof,
tinted glass, radio. Sharp. \$28,000

72 MERCURY Sheriff cars. 4-dr.
hardtop, V-8, auto., p.s., p.b.,
air cond. Excellent transportation. \$12,000

71 PONTIAC LeMans T-37 2-dr.
hardtop, 360, auto., p.s., air cond.,
road wheels, vinyl roof, sharp. \$25,000

71 VW Super Beetle, sharp, custom
paint job. \$17,000

71 PLYMOUTH Fury III 2-dr.
hardtop, 318, auto., p.s., p.b.,
air cond., vinyl roof. \$17,000

71 VW Super Beetle, sharp, \$10,000

71 DODGE B-800 custom Sportman
wagon, 318, auto., p.s., p.b.,
8-pass, blue and white. \$24,000

71 DODGE B-100 Sportman wagon,
225, 8-speed, radio, new tires,
6-pass. \$21,000

71 CHEVY 1/2-ton pick-up, 350,
auto., p.b. \$17,000

70 DUSTER sport coupe 318, auto.,
p.s., 30,000 miles and sharp! \$18,000

70 DODGE Coronet Crestwood, 9-
pass, wagon, 318, auto., p.s.,
p.b., air cond. \$14,000

70 CHALLENGER RT 2-dr hardtop,
383, auto., rallye cluster
and suspension. \$15,000

69 BUICK Sports Wagon, V-8,
auto., p.s., p.b., air cond. \$10,000

69 CHRYSLER New Yorker 4-dr.,
full power, air cond., vinyl
roof. \$11,000

68 CHEVY Impala SS, V-8, auto.,
p.s., buckets. \$9,000

68 DODGE Coronet Crestwood 6-
pass, wagon, 318, auto., p.s.,
good transportation. \$9,000

Transportation Specials

69 CHRYSLER 2-dr. hardtop, 383,
auto., p.s., p.b. \$9,000

64 CHEVY 2-dr. sedan, 6-cyl.,
stick. \$9,000

64 FORD 4-dr., V-8, auto., p.s. \$9,000

Recreational Vehicles

72 24' CORSAIR travel trailer, used
45 hrs., like new, completely
equipped including add-a-room.
\$4,495

Cry-Star
Van Conversion
now in stock.
Completely equipped.

Village
Motor Sales, Inc.
IMPERIAL - CHRYSLER
DODGE - PLYMOUTH
Phone 475-8681

1185 Manchester Rd., Chelsea
Hours: 8 a.m. to 6 p.m.
Tues. thru Fri. Until 9 Monday.
9 a.m. to 2 p.m. Saturday

72 24' CORSAIR travel trailer, used
45 hrs., like new, completely
equipped including add-a-room.
\$4,495

ELECTROLUX VACUUM CLEANERS

SALES and SERVICE
JAMES COX
Ph. 428-2991 or 428-8221

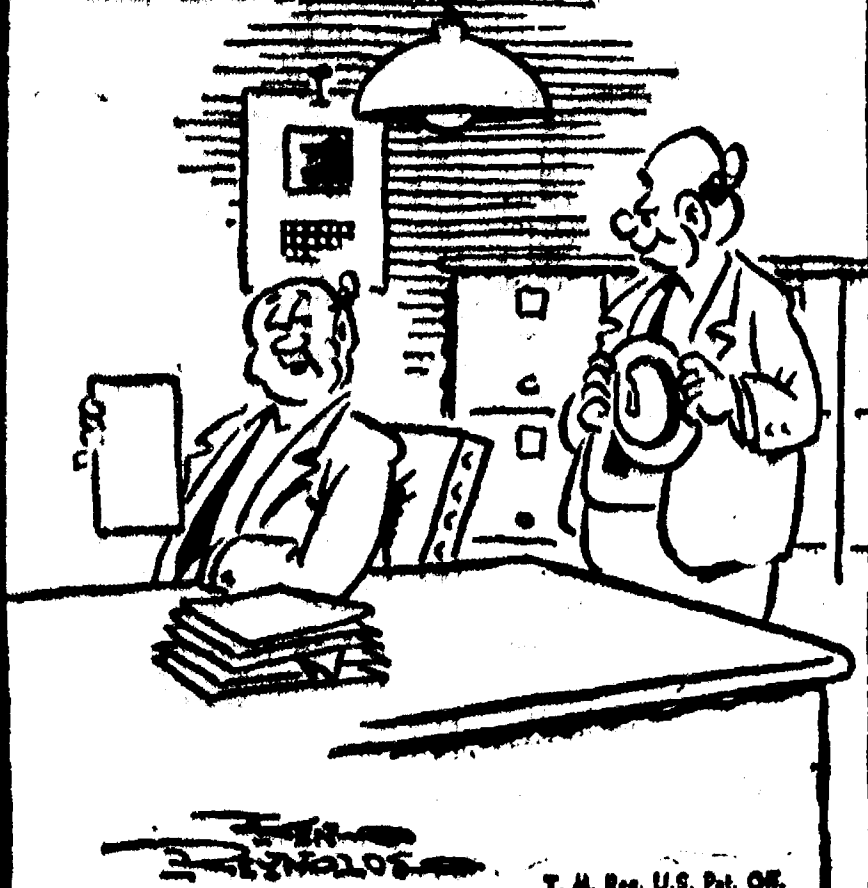
72 24' CORSAIR travel trailer, used
45 hrs., like new, completely
equipped including add-a-room.
\$4,495

72 24' CORSAIR travel trailer, used
45 hrs., like new, completely
equipped including add-a-room.
\$4,495

72 24' CORSAIR travel trailer, used
45 hrs., like new, completely
equipped including add-a-room.
\$4,495

72 24' CORSAIR travel trailer, used
45 hrs., like new, completely
equipped including add-a-room.
\$4,495

TIPS



"My Standard Want Ad said to bring references - who's this guy 'Rover'?"

WANT ADS

SHOES FOR REPAIR picked up
and delivered every Monday at
Parish's Cleaners, 113 Park St.

Attention High School Graduates

K-Mart's Men's Wear Dept. is looking
for an ambitious high school
graduate. Fast advancement. Company
paid Blue Cross and Blue
Shield. Other company benefits.

Inquire at
K-MART
215 N. Maple Rd.
Ann Arbor, Mich.
Monday - Friday, 10-5

Help Wanted

Retired man for part-time work
repairing appliances (refrigerators,
air conditioners, etc.). Call
Mr. Bridges, 475-1347, Lloyd Bridges
Traveland.

BE A MERRIMAKER
SELL TOYS & GIFTS
NO Experience Needed
*FREE Training
*FREE Toy Kit
*Top Pay & Bonus
*Best Hostess Program
MERRIMAC TOY SHOWS
11393 N. Crowe, Milan, 489-1954

NORTH LAKE CO-OP is taking
registrations for the fall after-
noon sessions. Enroll your pro-
fessional now in a fun program
with an experienced teacher. Ph.
475-7388 or 475-1537.

MEN'S Summer Footwear Save 1/3 DANCER'S Main Floor

Watch for Our
Next Week's Adv. for
**Sidewalk Sale
BARGAINS**

DUTCH BOY, interior and exterior
paints. Discontinued colors, over-
stock items and close-outs.

CARPETING SAMPLES—Several
sizes and colors. Ends of rolls
of carpeting and discontinued pat-
terns.

PORCH & LAWN furniture.
ODDS & ENDS of household furni-
ture.

DRAPERIES and drapery material.
GIFT ITEMS and many others too
numerous to mention.

MERKEL Home Furnishings

828 S. Main, Chelsea 475-8028

828 S. Main, Chelsea 475-8028

828 S. Main, Chelsea 475-8028

828 S. Main, Chelsea 475-8028

828 S. Main, Chelsea 475-8028

828 S. Main, Chelsea 475-8028

828 S. Main, Chelsea 475-8028

828 S. Main, Chelsea 475-8028

828 S. Main, Chelsea 475-8028

828 S. Main, Chelsea 475-8028

828 S. Main, Chelsea 475-8028

828 S. Main, Chelsea 475-8028

828 S. Main, Chelsea 475-8028

828 S. Main, Chelsea 475-8028

828 S. Main, Chelsea 475-8028

WANT ADS

CLOGGED SEWER

Reynolds Sewer
Service

We Clean Sewers Without Digging
Drains Cleaned Electrically

FREE ESTIMATES
2-YEAR GUARANTEE
Phone Ann Arbor NO 2-6277
"Sewer Cleaning Is Our Business -
Not a Side-Line"

COUNTRY AUCTION

ANTIQUES - FARM MACHINERY
HOUSEHOLD

We will sell the following at pub-
lic auction located at 4400 Web-
er Road, Saline, Michigan. Take
Saline-Ann Arbor Road 2 miles
north of Saline then 1 mile west
on Weber or 6 miles south of
Ann Arbor.

Saturday, August 4 AT 11:00 a.m.

Antique square oak table, 5
dressers, bamboo easel, 2 cop-
per tea kettles, fruit jars, antique
stone carrier, ice tong, copper
wash boiler, 7 barn lanterns, or-
nate cast iron bed, brass bed, lead-
ed glass windows, cupboard, 2
hand-hewn tables, pie safe, daven-
port, oak library table, 6 oak
cane bottom chairs, 6 oak chairs,
assortment of crocks, antique pic-
ture frames, oak sewing rocker,
30-gallon crock, Victorian marble
top table, buffet, oak rocker,
small oak table (turned legs,
claw feet), cream separator, an-
tique grinder, pitcher pumps, an-
tique baby stroller.

Laundry stove, grain bags, hand
sprayer, platform scales, harnes-
ses, names with brass, eveners,
single trees, wagon tongues, horse
shoes, buck saw, log chains, grind
stone, scalding kettle and trough,
14 railroad ties, fanning mill, mis-
cellaneous hardwood lumber, 10x16
brooder house, chicken feeders, hog
feeders, hog crate with holder,
38' extension ladder, lots of an-
tique hand tools.

Ferguson Tractor To-20 (Runs
good, good rubber), Allis-Chalmers
Model A 2035 tractor (good
shape, runs good), 1937 Dodge
1 1/2-ton truck (good rack, runs
good), No. 1 Birdall clover huli-
er, 3-pt. cycle bar mower, 2-pt.
plow, 3-pt. corn planter with check
row wire, Ferguson manure load-
er, 16' aluminum elevator, disc,
2-bottom J. D. plow, 3-bottom
A. C. plow, 2 spring tooth drags,
8' cultipacker, 100 bales of hay,
250 bales of straw, cutter sleigh
(mint condition with brass bells,
made by Walker Mfg., Ann Arbor),
bob sled, horse-drawn New
Idea spreader, dump rake, hay
teeder, woad wheel wagon, wood
wheel grain drill, horse-drawn
mower, cultivator, side delivery
rake, lime drill, steel wheel wagon
with flat rack, two Low cultivat-
ors, New Idea hay loader (good
shape) McCormick grain blider,
antique garden marker wheel,
cultivator with wipple tree.

Many More Items Not Listed.

Herman Alber OWNER

Lloyd R. Braun - Ann Arbor,
685-9646
Jerry L. Helmer - Plymouth,
453-4109

Nothing removed until settled for.
Not responsible for accidents.
Lunch on grounds.
Inspection day of sale.
TERMS: Cash or Check.

WILL BABYSIT in my home.
Any shift. Dependable. Phone
475-1992.

THORNTON 475-8628

UNIQUE - Very lovely, custom
built, 3-bedroom home located
near high school. See it, you'll
like it.

VILLAGE ESTATE - Beautiful
brick ranch with 2 fireplaces on
2.9 acres. Many extras among
magnificent surroundings. Great
location.

COLONIAL—4-bedroom, 2 1/2 baths,
family room, fireplace, electric
heat and lots of "goodies" tucked
away on this wooded lot in North
Lake area. Owner very anxious.

SHARP HOME—Golf course front-
age, beautiful view, wooded lot,
frontage on Inverness Country
Club. Good access to North Lake.
Large 3-car garage.

BRICK and REDWOOD—A very
large, custom built 5-bedroom
home with all the extras of truly
gracious living situated at edge of
village on nice wooded corner lot.

98 ACRES—Rolling terrain; 4-
bedroom home, 8 acres wooded,
65 acres tillable. Close to I-94.

78 ACRES—Within the heart of
Waterloo Recreation Area a 2-
House, barn, excellent frontage on
two roads. Chelsea schools. Priced
to sell at \$75,000.

BUILDING SITES: Lots of roll-
ing, to choose from; rolling,
wooded and on or near the lakes;
many on or near black top road.
Terms possible.

ROBERT H.
THORNTON
JR., P.O.
REALTOR
828 S. Main, Chelsea 475-8028

828 S. Main, Chelsea 475-8028

828 S. Main, Chelsea 475-8028

828 S. Main, Chelsea 475-8028

828 S. Main, Chelsea 475-8028

828 S. Main, Chelsea 475-8028

828 S. Main, Chelsea 475-8028

828 S. Main, Chelsea 475-8028

828 S. Main, Chelsea 475-8028

828 S. Main, Chelsea 475-8028

828 S. Main, Chelsea 475-8028

828 S. Main, Chelsea 475-8028

828 S. Main, Chelsea 475-8028

828 S. Main, Chelsea 475-8028

828 S. Main, Chelsea 475-8028

828 S. Main, Chelsea 475-8028

828 S. Main, Chelsea 475-8028

WANT ADS

PATCHING and PLASTERING.
Call 475-7489.

G. G. HOPPER

Building Contractors
Gregory 498-2148

HELP WANTED

Manager for Appliance Dept. of a
large local discount store. Ex-
perience not necessary, but is de-
sirable. General benefits and start-
ing salary.

Inquire at
K-MART
215 N. Maple Rd., Maple Village
Ann Arbor
Mon. - Fri., 10-5

Special of the Week

1969 Buick Electra 4-dr. Hardtop
Air Conditioning
\$1595

USED CARS

1972 CHEV Impala 2-dr. hardtop
\$2895

1970 PLYMOUTH Roadrunner, 4-
speed. \$1095

1970 PONTIAC Catalina wagon, 3-
seat, air cond. \$1895

1970 BUICK LeSabre 2-dr. hard-
top. \$1895

1969 OLDS Delta 88 4-dr. hardtop,
air cond. 2 to choose from. \$1895

1969 OLDS Delta 88 2-dr. hardtop
\$1195

1969 BUICK Skylark 4-dr. sedan,
air cond. \$1495

1969 CHEVROLET Caprice 4-dr.
hardtop, 44,000 miles. \$1495

1969 FORD Galaxie 500 4-dr. se-
dan. \$895

1969 FORD Fairlane 500 2-dr.
hardtop, 45,000 miles. \$895

1969 CHEV Impala 2-dr. hardtop.
\$695

1969 OLDS Luxury 98 4-dr. hard-
top, air cond. \$995

Consumers Council Explains New Law on Time Purchases

Consumers may not have to wait long for a new regulation that doesn't discriminate as a clearly better improvement on a time purchase agreement.

With the advent of an old Michigan law known as the "three-day cooling off" law, which allows consumers to cancel contracts signed in their homes within three business days.

To obtain a free copy of the bulletin, send a stamped, self-addressed 10¢ inch envelope to the Michigan Consumers Council, 330 Hollister Building, Lansing 48933.

The Michigan Consumers Council has published a bulletin explaining this change in the law entitled "You Can Stand Up to Unfair Businessmen." The bulletin also explains the Home Solicitation Sales Law, commonly known as the "three-day cooling off" law, which allows consumers to cancel contracts signed in their homes within three business days.

Service Men's Corner

Pinckney Area Youth Completes Air Force Specialist Course

Dikoni, Miss.—Airman Barry C. Becker, son of Mr. and Mrs. Arnold W. Becker, 3620 Hooker Rd., Pinckney, Mich., has graduated at Keesler AFB, Miss., from the U. S. Air Force aerospace control and warning systems specialist course conducted by the Air Training Command.

Airman Becker, who learned to operate electronic consoles used in space tracking and control systems, is being assigned to Ft. Lee, Va., for duty.

The airman, a 1969 graduate of Pinckney High school, attended Washburn Community College Ann Arbor, Mich.

On the average you eat about 15 calories more per day for every one degree drop in temperature.

CHELSEA FINANCE CORP.
\$25 to \$1,500
For Any
Worthwhile Purpose
See or Call
FRANK HILL
at 475-8431
111 PARK STREET
CHELSEA, MICH.

IT'S TIME YOU TRIED CHIROPRACTIC

There is only one healer. It's not a pill or shot or surgery. It's not a doctor of any kind. It's your body itself and its intelligence within. Nature always knows what to do unless it is interfered with. Chiropractic attempts to remove this interference. It does not treat the symptom or the disease. It does not cure the disease — for this can only be accomplished by nature from within. Visit your Chiropractor today. Let him determine if interference through spinal misalignment is the cause of your Health Problem.

Don't Wait Until You Become A Statistic.

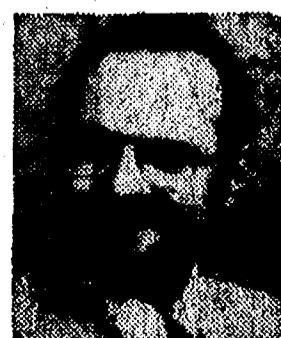
HOURS: Mon., Wed., Fri., 9-12, 2-5, 6-8; Sat., 9-12.
CLOSED TUES., THURS., SUN.

CHIROPRACTIC FOR LIFE
CHIROPRACTIC CENTER
7970 CLARK LAKE RD. CHELSEA, MICH. 475-7633
We're across the road from Clark Lake on M-52, 1/2 mile north of Waterloo Rd.
IF LOST, 475-7633



You and Your Farm...

... one of the reasons we're in business. The first with a Farmowners policy, the first with an Agropian, the first with an environmental protection endorsement. All at a fair price. And snowmobile, swimming pool and outboard motorboat liability is yours ... at no extra cost. Check the facts with Charlie Foster or ...



DAVE ROWE
475-8065



DOUG ROBESON
475-7389

FARM BUREAU INSURANCE GROUP

Farm Bureau Mutual • Farm Bureau Life
Community Service Insurance Company • Farmers Mortgage



ROCKWELL INTERNATIONAL is well represented in slow pitch softball by this group of players, managed by Paul Garman. They are, in back, from left, Steve Garlund, Jack Patrick, Larry Shively, Charles Waller, Dave McLaughlin, Joe Beard, and in front, Russ Pichlik, Charles Matloff, manager Paul Garman, and Ed Brown.

Camp for Deaf, Hard of Hearing Slated at Fa-Ho-Lo

A camp for the deaf and hard of hearing is to be held at Fa-Ho-Lo Campgrounds near Grass Lake, from Aug. 5-12. The camp is for all ages. However, children under nine years of age must be accompanied by an adult.

Campers may attend for the full week or for any part of the week. Many activities will be provided, including recreation, All deaf or hard of hearing persons are welcome and are invited to attend.

For a free brochure giving further information, one may write to: Ray L. Jones, 36970 S. Huron Rd., New Boston 48164.

Attend Meeting Of Chiropractors In Atlanta, Ga.

Dr. and Mrs. Daniel R. Elwert and son of Chelsea, have just returned from Atlanta, Ga., where they attended a Life D.E. meeting of chiropractors from around the world held at the Sheraton-Biltmore. More than 2,000 attended.

Paul Bragg of Honolulu was one of the outstanding guest speakers. Bragg is known internationally as a life extension specialist, writer and speaker. At 92, he still swims, jogs and surfs every day. His daughter, Patricia, a nutritionist and beauty consultant, also spoke.

Other speakers were Les Giblin, author, lecturer and motivator of Ho-Ho-Kus, New Jersey; Dr. C. S. Gonstead, director and founder of the world's largest Chiropractic Clinic, located at Mt. Horeb, Wisc.; Dr. Alex Cameron, inventor and heartometer specialist, of Chicago, Ill.; and Jaquin Davison of San Diego, Calif., author of "Fascinating Womanhood."

Dr. Sid Williams, founder of D. E., was the principal speaker. Dr. Williams, a graduate of Georgia Tech and Palmer College of Chiropractic, is also president of the Life Foundation and publisher of Today's Chiropractic, an international magazine for chiropractors.

SAUNAS

In Finland, saunas are often built as separate cabins made of wood, sometimes roofed with sod, and preferably next to one of the nation's 70,000 lakes. In southern California they may be built in colonial Spanish style complete with curved roof tiles and plaster outside walls.

Jackson County Fair Opens Sunday With New Attractions

"Take Time to Smell the Flowers" at the 58th Jackson County Fair and Petunia Festival which opens Sunday, Aug. 5 and continues through Aug. 11.

Herman Gumper, manager, has announced several new additions and activities to this year's even more exciting fair. The Floral-culture and Sunday School Departments have been enlarged and redesigned with additional categories of competition to accommodate entries "running way ahead of last year," according to Gumper.

Those with the sense of adventure of Tom Sawyer may enter the Barrel Painting Contest. Barrels will be provided, while contestants bring their own paints and brushes and then the artistic fun begins. Winners will be selected for their originality in design with prizes ranging from \$5 to \$20. Deadline for entries is Aug. 3.

Because beauty is such an integral part of the Fair, a new structure has been built in the Agricultural Building to enhance this year's Petunia Festival even more. This new addition is called a Flume house, which is a walk-in building decorated with flowers with a water trough which cascades into a pool. The landscape, in tune with each year's Petunia Festival, will be as attractive as ever with thousands of colorful Petunias decorating the fair grounds.

The 1973 Grandstand Program will include many of the old favorites this year. The kick-off for the opening day of the Fair, Sunday, Aug. 5, will include the Pony Trotting Races at noon and the Pony Pull at 2 p.m. The Garden Tractor Pull with prizes amounting to \$1,350 will commence at 6 p.m.

Monday, Aug. 6 is Children's Day, when all children 14 years and under will be admitted free to the Fair until 5:30 p.m. Dan Fleenor, the King of Auto Thrills, will be on hand with his Hurricane Hell Drivers at 8 p.m. Fleenor and his Auto Stunt Show have entertained capacity crowds in the grandstand each year at the Fair with his death defying auto exhibitions, including the famous T-Bone jump and parallel dives. Tickets for Fleenor's show are on sale now at the Fair Office at the fairgrounds.

Tuesday, Aug. 7, Gene Holter's Ostrich Races and Wild Animal Show will be another first for fairgoers, delighting both adults and children at 7:30 p.m.

Senior Citizen's Day is Wednesday, Aug. 8 for all persons 65 years and over admitted for 75 cents until 5:30 p.m. The traditional Farm and Modified Tractor Pull will begin at 3 p.m. at the Grandstand. Literally hundreds of stock and modified tractors, souped up with airplane engines, from all over the country will vie for thousands of dollars in prize money.

Thursday, Aug. 9 at 7 p.m. the Light Horse Pulling Contest begins and for Country and Western fans, world famous Boots Randolph will entertain on Friday, Aug. 10 at 8 p.m.

The closing day of the Jackson County Fair will have even another new attraction. Bargain Day is Aug. 11 with rides reduced for everyone until 5:30 p.m. This year's Teen Show will be the European rock group, Focus, at 8 p.m.

Ticket information for the grandstand show and entry blanks and rules for the various contests may be obtained by calling the Jackson County Fair at 782-5922 or by visiting the office at 200 W. Ganson St.

IN THE SHELL

Fresh coconuts in the shell retain good quality up to a month in the refrigerator.

WASH THIS PAINT RIGHT OUT OF YOUR HAIR!



**Dutch Boy
Latex
SATIN
GLOSS
ENAMEL**

- Clean up spills, spatters, brushes & rollers with soap and water.
- Flows on easily with roller or brush—no runs or sags.
- Fast, fast dry.
- Non-yellowing.
- Enamel-scrubbability.
- Odorless.
- Ideal for kitchens, bathrooms, cabinets, woodwork, and many more.

Ask us for Dutch Boy® Latex Satin-Gloss Enamel today!



**MERKEL
BROS.**
Phone 475-8621

AGRICULTURE IN ACTION

by Carl P. Ketcher

MICHIGAN FARM BUREAU

★ Telling It

Like It Is . . .

The image of the farmer has changed. Cartoonists, who for years have depended upon a sketch of a bib-overalled, straw-hatted, monosyllabic individual with pitchfork in hand, are faced with a challenge. It's much harder to depict a businessman, community leader, educated and articulate—and almost overnight a VIP in the public eye.

One characteristic of the former hasn't changed; he still "tells it like it is," even when he makes front-page news. When the lifting of the price freeze was announced and banner headlines predicted higher food prices, the farmer simply said: "I will not work harder and produce more for less income. I must have a fair return for my labor, risk and investment."

He could have followed the lead of General Motors when they made the announcement that 1974 automobiles would cost more. "Strong upward pressure on our costs is expected to continue . . . new safety belt and bumper systems will add to the cost of new cars . . . profit margin control must be considered as only a short-term expedient. Extended for any period of time, this principle would undermine investment incentives, impairing the expansion of output essential to both the long-term price stability and to improve living standards."

Farmers could have used the same flowery language regarding higher food prices. They also had "strong upward pressure" on their costs and it is "expected to continue" in the new crop year. Also, new safety rules and chemical regulations will add to the cost of producing new crops.

As for controls undermining incentives and impairing expansion in common language that consumers readily understand, the farmer says, "We cannot produce food if we can't make a living at it. There has to be a profit returned on our investment of time and materials, or else we can't stay in business."

Stated simply—but it is simple, and you can't fool the American consumer with highflow diction. He knows he can get along without an automobile, but he can't live without food. He can't force the farmer to produce this food, but he can provide the incentive to make him want to do so.

That's telling it like it is . . .

The Chelsea Standard, Thursday, August 2, 1973 11

Matt Boyer Participates in International Music Festival

Matt Boyer, son of Mrs. Fred Granger of Irons, and former resident of Chelsea, was one of 57 members of the Baldwin Band to travel to Vienna, Austria, to participate in a 10-day competition at the International Youth Music Festival.

Opening ceremonies and first performance of the Mass Festival Band was under the direction of Dr. William D. Revell, retired director of bands at the University of Michigan, and Professor Joseph Leeb of Salzburg, at the Schonbrunn Palace.

David Eby, band director of Baldwin schools since 1964, band members and chaperones, left Baldwin, by school bus at 5 a.m. Thursday, July 5, journeying to Windsor, Canada, where they boarded a KLM Royal Dutch airline DC-10-30 for Vienna.

They flew by way of Montreal, Canada, Amsterdam and Holland. They returned to Baldwin July 16. On hand to greet the returning students were parents and townspeople whose combined efforts helped to raise the \$40,000 it took to pay the expenses of the trip for the young musicians.

The Baldwin band was one of 17 American bands going to Vienna and the only Michigan band. Dr. Revell stated "you truly have been fine representatives of your school, town and the great State of Michigan."

Seventy percent of the band was 13 and 14 years of age. Their inexperience was the main reason for receiving a second division rating in both concert and marching.

Governor Milliken extended sincere congratulations to the Baldwin band as being the only band representing Michigan at a Youth and Music in Vienna. There were 13 bands from the United States, five from Austria, two from Germany, one from Holland, one from Italy and one from Czechoslovakia.

Bands and orchestras represented the states of California, Florida, Illinois, Kansas, Michigan, Mississippi, Missouri, Nebraska, New Jersey, North Carolina, Texas and Vermont.

TOO OLD? TOO YOUNG?

Don't believe it! Plenty of people 18-80 are earning substantial commissions in the real estate profession. The only ingredient required is desire. For information on how you can join the Midwest's largest real estate firm, call 475-8693.

WEED REALTY, INC.
REALTORS

ROCKCRETE PRODUCTS

6991 M-52 Phone 475-2848 Manchester

INTRODUCES THEIR TWO NEW RITE-WAY TRANSIT MIXERS

Contractor Saves Time and Labor with These New Mixers.

WASHED SAND & STONE
ROAD GRAVEL - LIMESTONE - TRANSIT MIX

THIS WEEK ONLY SPECIAL

ANY CHAIR STRIPPED FOR \$5

*except rocker

JACK THE STRIPPER!

* delivery service available * hours: 10-6 mon.-sat.

308 S. ASHLEY
(near Liberty)

ANN ARBOR
769 - 2720



JACKSON COUNTY FAIR AND PETUNIA FESTIVAL

SUNDAY, AUGUST 5

12:00 Noon — PONY TROTTING RACTS
2:00 p.m. — PONY PULL
6:00 p.m. — GARDEN TRACTOR PULL

MONDAY, AUGUST 6

CHILDREN'S DAY, all children 14 years and under admitted free 'til 5:30 p.m.
8:00 p.m. — DAN FLEENOR'S AUTO STUNT SHOW

TUESDAY, AUGUST 7

7:30 p.m. — GENE HOLTER'S OSTRICH RACES and WILD ANIMAL SHOW

WEDNESDAY, AUGUST 8

SENIOR CITIZENS DAY, all persons 65 years and over admitted for 75c 'til 5:30 p.m.
3:00 p.m. — FARM & MODIFIED TRACTOR PULL

THURSDAY, AUGUST 9

7:00 p.m. — LIGHT HORSE PULLING

FRIDAY, AUGUST 10

8:00 p.m. — BOOTS RANDOLPH SHOW

SATURDAY, AUGUST 11

BARGAIN DAY — Rides reduced for everyone 'til 5:30 p.m.
8:00 p.m. — FOCUS

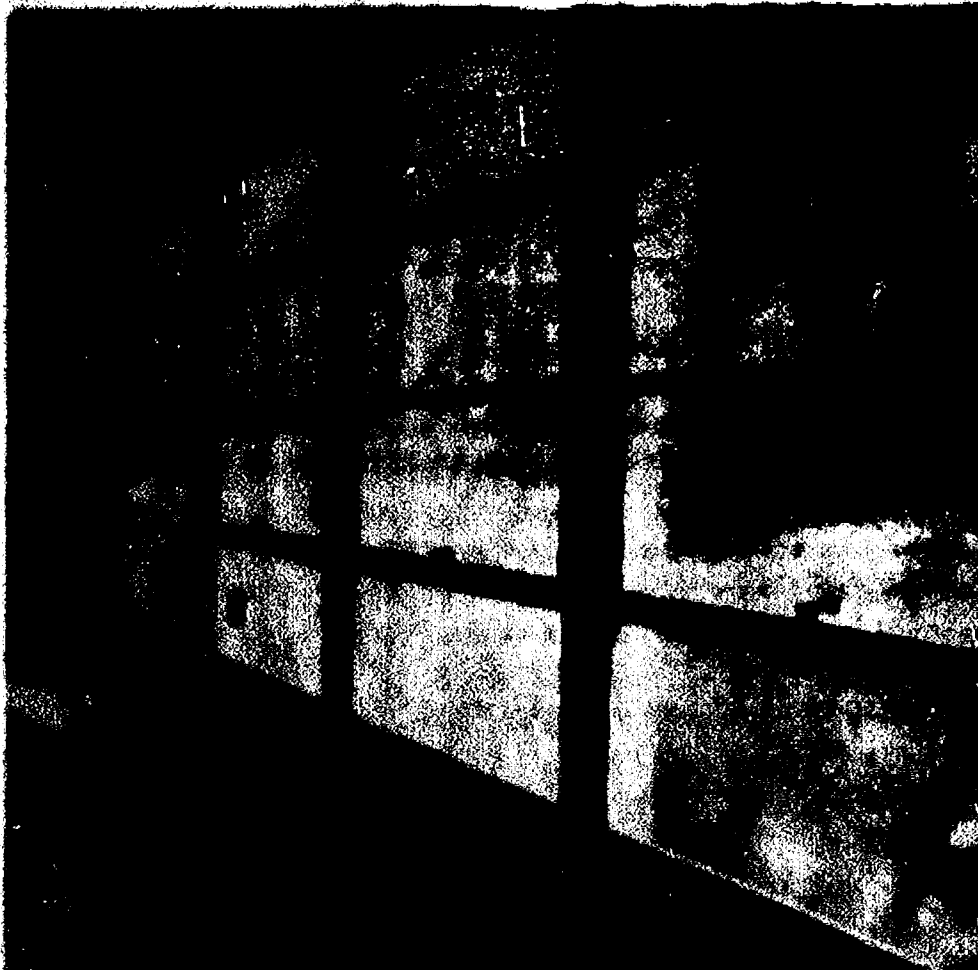
FOR COOKING TOO

Put your family's favorite beverage to work as a dependable kitchen helper. Cook with milk and taste the difference for yourself! Cooked foods are more flavorful than ever before. Use milk when you bake . . . in puddings and custards . . . in soups, gravies, sauces, creamed vegetables. Milk makes them all taste just scrumptious . . . adds extra nutrition, too.



**HICKORY RIDGE
FARM DAIRY**

Ph. Stockbridge (517) 851-3600



THE MORNING AFTER: It was a disheartening scene Saturday morning when members of St. Barnabas Episcopal church found that vandals had destroyed many of the windows that enclose the sanctuary. This is not the first time the church on Old U.S. 12 has been struck, but this time, "instead of B-I's, they used hand saws," said Francis Wojcikowski who helped the Rev. Jerry Beaumont cover the holes with plastic. It is doubtful that the shattered, stained glass will be replaced. Plastic panes, though less aesthetically appealing, may be more practical.

Vandals Break Windows at St. Barnabas

Vandals, who have been a constant source of distress to the congregation of St. Barnabas Episcopal church on Old U.S. 12, were active again last weekend. With large chunks of black top and rocks, they pelted and broke nearly every window pane at the rear of the church.

A similar, less serious incident happened last fall leaving several of the tinted, old-fashioned glass panes pitted with holes from B-I pellets. Last Friday night's barrage left large gaping holes that exposed the interior hall to the elements.

The Rev. Jerry Beaumont and Francis Wojcikowski spent a portion of Saturday protecting the church by putting up sheets of plastic to keep the rain out.

The Rev. Beaumont commented, Saturday, that the acts of vandalism were not new in their area. The congregation had to dismantle a children's chapel in the adjoining woods last spring because it was being abused and used for beer parties.

Police were called to the scene, Saturday morning, after the situation was discovered by Mrs. Edwin Eaton.

FROZEN LASAGNA
Lasagna freezes well either before or after baking. Thaw in the refrigerator.

GROHNERT'S FARM MARKET

Corner of Waterloo & Bush Rds., Chelsea
OPEN EVERY DAY, 9 a.m. to 9 p.m.
ASSORTED FRUITS & VEGETABLES - BLACK WALNUTS
WOOD - BLACK DIRT ON ORDER

Sweet Corn will be ready soon.
Taking orders now for canning and freezing.
CALL 475-8551

COMING SOON!

The Gillies Company, a name synonymous with service, success and performance in Real Estate Sales throughout Washenaw County, is coming soon to Chelsea. In addition to providing our many Chelsea friends with complete and comprehensive Real Estate services, our new Chelsea Branch Office will be representing Mr. Dale Cook, Builder, of Countryside Homes. We're looking forward to our move to Chelsea, and our association with Mr. Cook. We hope to see you soon, too.

- member National Association of Realtors
- member Michigan Real Estate Association
- member Ann Arbor Board of Realtors
- member Multiple-Listing Service
- member World-Wide Business Brokers
- member Real Estate Alumni of Michigan

Would you like to join our growing sales staff? We have immediate openings in our Chelsea Branch office. An exciting and rewarding career awaits you.

"We list homes to SELL"

the gillies co.

Realtors

761-6130

Musical Youth International Closing Out Summer Tour

After a successful tour of Venezuela and British Honduras, the Musical Youth International band and chorus are now touring Mexico. Their performance at Chichen Itza, Mexico, site of ancient Mayan temples, prompted one reviewer to remark, "The ancient Mayan gods must have heard and been pleased."

Suzanne Hafer, 8912 Werkner Rd. is among the MYI students on the tour. The assistant director of the group is also from Chelsea. He is Bruce Galbraith of 56 Chestnut.

The young men and women of MYI have made many friends for the United States through their musical ability and during their home stays with people in the countries they visit. This is the purpose of MYI, and of People-to-People, an organization founded by President Eisenhower to create world understanding on a personal basis. MYI is the first chartered youth chapter of People-to-People.

Throughout their concert tour the youth members and the staff have appeared on TV shows and have been interviewed on radio. Large, enthusiastic crowds have attended their concerts in South and Central America and Mexico.

The 1973 tour will terminate with a series of concerts in Ohio and Michigan. The first will be in Columbus, O., on the Capitol steps, Thursday, Aug. 2, at noon. The following day, Aug. 3, the group will perform at Jackson, 8 p.m., at the Cascades.

The Community College in Lansing will host a concert Saturday, Aug. 4 at 8:30 p.m.

The final concert will be in Hill Auditorium in Ann Arbor on Sunday, Aug. 5 at 2:30. Tickets for the Michigan concerts may be purchased at the time of the performance.

Pinckney Man Charged with Fleeting Police

Paul M. Taggart, 25, of Pinckney, is scheduled to appear in 14th District Court tomorrow to offer a plea on a charge of fleeing a police officer.

Dexter village police say that Taggart led a scout car on a 95-mile-per hour chase July 23 before his motorcycle struck the police car and ran off the road.

According to Patrolmen Curtis T. Brown and Gary Seer, they began pursuit of Taggart near Dexter Fire Hall. The officers say Taggart was speeding at the time and continued to do so as he went north on Dexter-Pinckney Rd., reaching at one point a speed of 95 miles per hour.

As the patrol car and cycle rounded a curve in the highway near Wylie Rd., in Dexter township, the police vehicle passed the cycle and went into a roadside skid, say sheriff's deputies who investigated the accident. Officer Brown kept the scout car on the road, bringing it to a stop across Dexter-Pinckney Rd.

Taggart's motorcycle crashed into the left front bumper of the police car and then went off the road into a ditch. Taggart was released from St. Joseph Mercy Hospital after medical treatment. Neither officer was injured.

PEANUT HISTORY

Peanuts evolved thousands of years ago in South America. Peanut-shaped pottery and peanut designs have been found in Inca Indian tombs.



SUZANNE HAFAER

In 1985, according to some economists, consumer expenditures will have increased in the following amounts over what we're paying today: food and beverages, 79 percent; personal and medical care, 185 percent; housing, 172 percent; recreation and education, 149 percent; household operation and furnishings, 110 percent; transportation, 107 percent and clothing, 95 percent. These predictions are based on a corollary forecast that all Americans will be receiving equivalently higher incomes.

Walk-in Clinic Opened at

St. Joseph Mercy Hospital

After several months of planning and preparation, the Administration of St. Joseph Mercy Hospital, in conjunction with the Washtenaw County Physicians Medical Care Organization, opened a Walk-In Clinic on a three-month pilot project basis on Monday, July 30.

The pilot nature of the clinic is necessary to assist the Steering Committee of the clinic in determining some basic facts for the continuation of the project—such as need, response, cost, availability, hours, staffing and financial solvency. In an effort to obtain answers to these questions, each patient will complete a questionnaire. If there is a demonstrated need for such a clinic and it can be financially self-supporting, more permanent plans, policies, and procedures will be formulated for future operation.

The Walk-In Clinic will be located in St. Joseph Mercy Hospital, Monday through Friday from 8 a.m. to 11 p.m. It will be closed on Saturdays, Sundays and legal holidays. Patients are asked to enter the "Outpatient Entrance" on N. Ingalls St. for registration and direction to the clinic. Because of the nature of this service as a Walk-In Clinic, no appointments will be made in advance. There will be a minimal charge of \$10 which includes a \$5 physician fee and a \$5 clinic fee to help defray direct personnel and supply costs. No surgical services will be

provided in the clinic. Diagnostic services such as x-ray procedures, laboratory tests and electrocardiograms will be provided and standard outpatient rates will be charged for these services. The clinic will be open to the community and will provide medical care to non-emergency patients and to those patients who

do not have a family physician. The program is designed to accommodate both those patients who are unable to pay for medical care as well as those who are able to pay but cannot find a physician to see them. It is hoped that the Walk-In Clinic will provide the availability and accessibility to the health-care

system for those persons considered to be medically under-served.

SOME VACATION

Overheard: Complaining to a friend about the rainy weather he had on his vacation, his friend remarked, "How come you are so tan?" "Tan, are you kidding," he replied, "That's rust."



TRADITION is very important to the townspeople of Anatevka, as the opening number by that name makes clear. Jeff Daniels (left), as Teyve, is complemented by the performances of Chris Al-ber (second from right), who plays his wife, and Jan Koengeter (fourth from right), the matchmaker.

HIGHEST REGULAR PASSBOOK SAVINGS INTEREST

5 1/4%

PER ANNUM
EFFECTIVE ANNUAL RATE 5.35%

DAILY INTEREST

NO MINIMUM DEPOSIT—WITHDRAW ANYTIME!

AND FOR YOUR
LONG TERM
INVESTMENT
DOLLAR, THESE
HIGH PAYING
PASSBOOK
CERTIFICATE
ACCOUNTS

6 1/2% PER ANNUM
6 3/4% PER ANNUM
7% PER ANNUM

FOR 12 MONTHS
ON \$1000 OR MORE
EFFECTIVE ANNUAL RATE 6.66%

FOR 30 MONTHS
ON \$5000 OR MORE
EFFECTIVE ANNUAL RATE 6.92%

FOR 48 MONTHS
ON \$1000 OR MORE
EFFECTIVE ANNUAL RATE 7.19%

ALL DEPOSITS INSURED TO \$20,000 WITH THE FSIC

WITHDRAWALS PRIOR TO MATURITY SUBJECT TO FEDERAL REGULATIONS

ANN ARBOR AAFS FEDERAL SAVINGS

the savings and loan specialists

ANN ARBOR OFFICES: Downtown, Liberty at Division; Westside, Pauline at Stadium; Eastside, Huron Parkway at Platt; Northside, Plymouth at Nixon; CHELSEA—Main Street near Old U.S. 12
Member: Federal Home Loan Bank System • Federal Savings and Loan Insurance Corporation